



Rufuto Restaurant at the Park Regis Hotel, Birmingham

## Granite

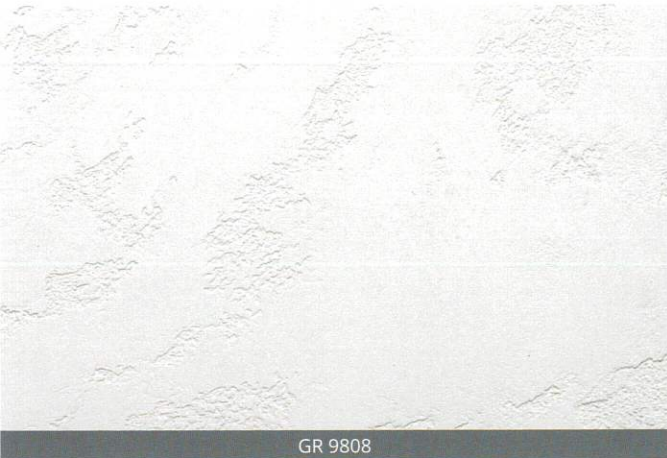
The Granite polished plaster finish recreates the timeless beauty and long-lasting qualities of granite, a classic choice offering a natural stone option.

This rugged finish, created from a natural material composed of hydrated lime and crushed marble, presents a rough-hewn surface full of texture and interest.

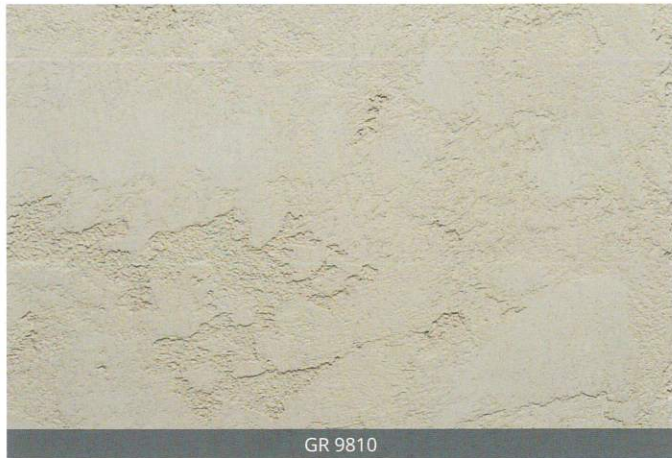




# Granite Effect Range



GR 9808



GR 9810



GR 9809



GR 9811



GR 9812



GR 9813

Colours and patterns illustrated are for guidance only. Due to print limitations, the exact patterns, colours and shades may vary from those shown. Please request a sample for accurate representation. These can be requested via the Armourcoat website by entering the product code.

**ARMOURCOAT**<sup>®</sup>  
SURFACE FINISHES

**SOLE AGENT in China, Hong Kong & Macau**

色譯藝術裝飾有限公司

**Lezard Design & Contracting Co., Ltd**

香港鰂魚涌船塢里 10-12 號長華工業大廈 5 樓 B 室

Unit B, 5/F., Cheung Wah Industrial Building, 10-12 Shipyard Lane, Quarry Bay, Hong Kong.

Tel: (852) 2591 1268 Fax: (852) 2892 0182

[www.armourcoat.com](http://www.armourcoat.com)

©2016 Armourcoat Limited. Granite is a product and trademark of Armourcoat Ltd.

GRB1016